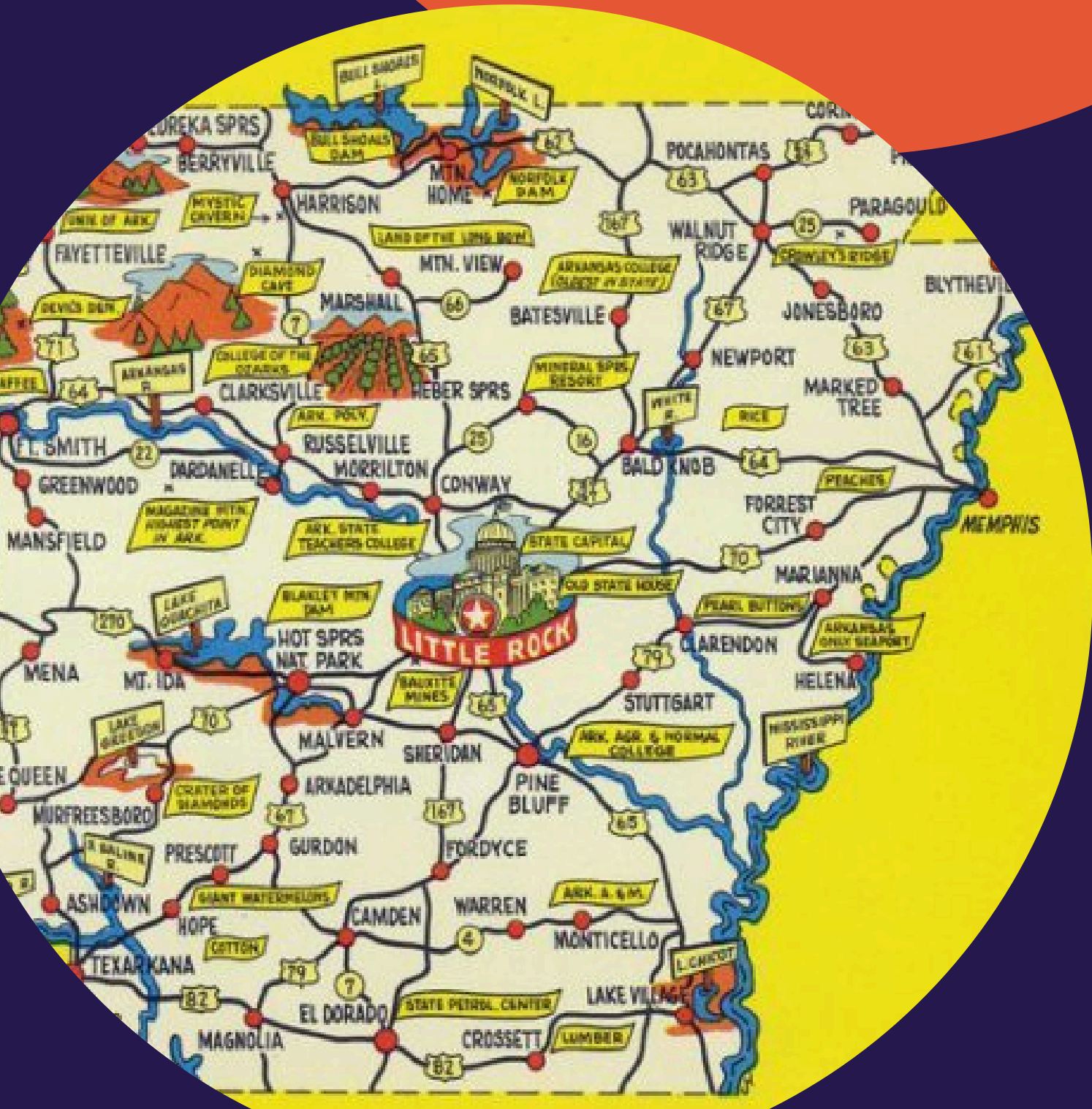


C
A
L
S

THE ENCYCLOPEDIA OF ARKANSAS



10 ARKANSAN WOMEN IN THE ARTS

WELCOME TO THE ENCYCLOPEDIA OF ARKANSAS

Everything from



Slime Molds

to



Garage Bands



THIS DAY IN ARKANSAS HISTORY

October 7, 2004

Hot Springs (Garland County) native Billy Bob Thornton's star on the Hollywood Walk of Fame was unveiled. Thornton is an actor, director, screenwriter, and musician who began his film career in the late 1980s and has since starred in a number of popular and critically acclaimed films. He received an Academy Award for Best Adapted Screenplay for *Sling Blade* (1996). Thornton has been married five times (most notably to actress Angelina Jolie) and has four children. He remains appreciated worldwide for his talent and known for his eccentricities (including his many tattoos and fears of antique furniture and reptiles), as well as his openness about dealing with obsessive compulsive disorder.

[Learn more about Billy Bob Thornton](#) >

BROWSE THE ENCYCLOPEDIA

Entries

BY CATEGORY >

A - Z >

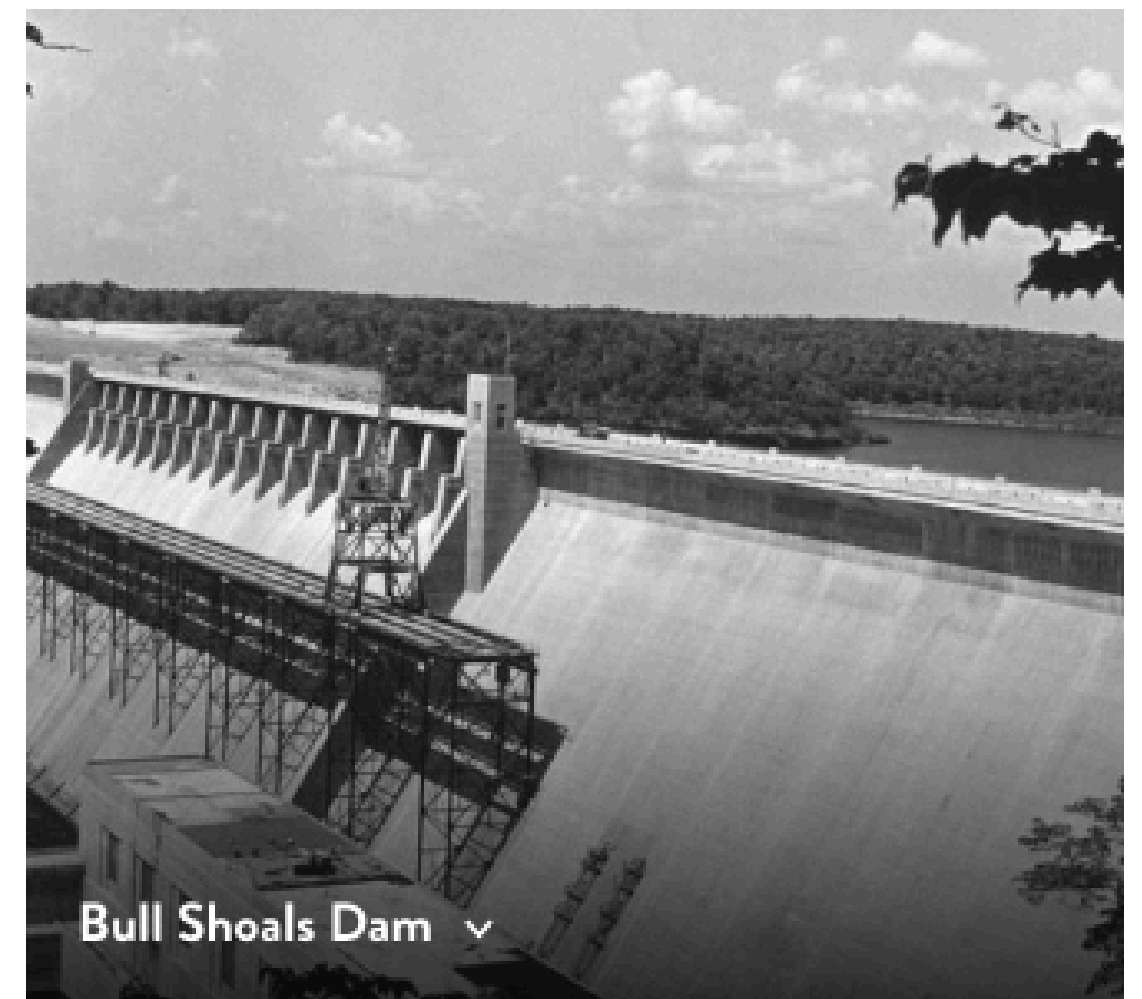
Media

BY CATEGORY >

A - Z >



PHOTO OF THE DAY



Bull Shoals Dam >

≈7,600
entries

ALL ENTRIES

FLOOD OF 1927

Flood of 1927

AKA: Great Flood of 1927

AKA: Mississippi River Flood of 1927

AKA: 1927 Flood

The Flood of 1927 was the most destructive and costly flood in Arkansas history and one of the worst in the history of the nation. It afflicted Arkansas with a greater amount of devastation, both human and monetary, than the other affected states in the **Mississippi River** Valley. It had social and political ramifications which changed the way Arkansas, as well as the nation, viewed relief from natural disasters and the responsibility of government in aiding the victims, echoing the **Hurricane Katrina** disaster in the present day.

In largely agrarian Arkansas, the Flood of 1927 covered about 6,600 square miles, with thirty-six out of seventy-five Arkansas counties under water up to thirty feet deep in places. In Arkansas, more people were affected by the floodwaters (over 350,000), more farmland inundated (over two million acres), more Red Cross camps were needed (eighty of the 154 total), and more families received relief than any other state (41,243). In Arkansas, almost 100 people died, more than any state except Mississippi. In monetary terms, the losses in Arkansas (totaling over \$1 million in 1927 dollars for relief and recovery) surpassed any other affected state.

The Flood of 1927 had its origins both in nature and in man. In the late 1920s, technological advances kept pace with the growing economy. Heavy machinery enabled the construction of a vast system of **levees** to hold back rivers that tended to overrun their banks. Drainage projects opened up new, low-lying lands that had once been forests but had been left bare by the **timber industry**.

ENTRY

Flood of 1927

TIME PERIOD

Early Twentieth Century (1901 - 1940)

CATEGORY

Environment / Land and Resources / Natural Disasters

TYPE

Event

LESSON PLANS

1927 Flood (Grades 5-8)

Arkansas's Top Ten Events (Grades 6-12)

Hard Times (Grades 7-12)

Mucket Mania (Grades 6-12)

Rollin' on the River (Grades 5-12)

Southern Flood Blues (Grades 9-12)

- **EVERY** incorporated community
- **Government officials**
- **Civil rights organizations from NAACP to CLOB**
- **EVERY** military action including the smallest skirmishes
- **Wildlife, flowers, plants**

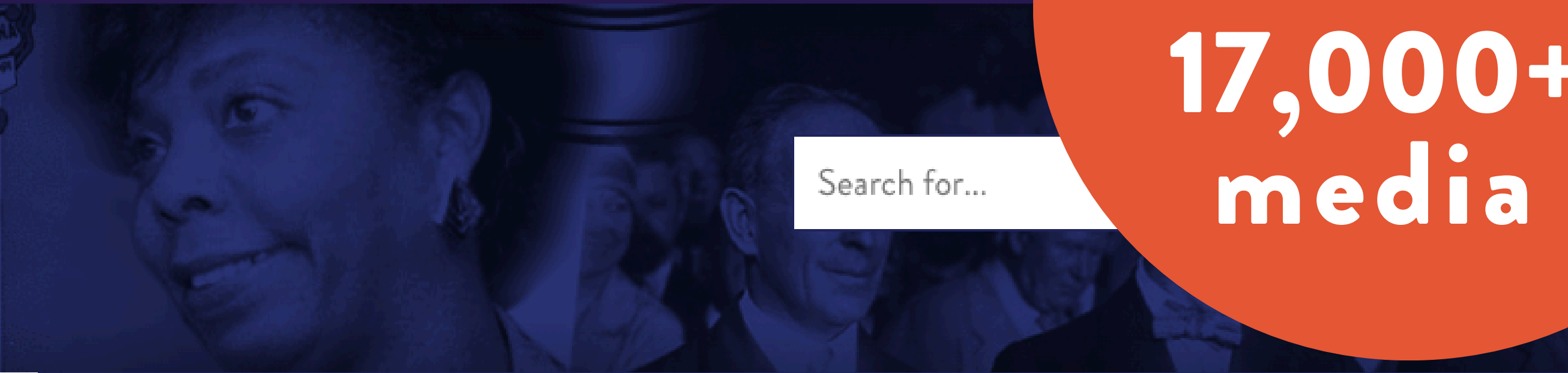


Produced by a public library

230 countries

EVERY continent





17,000+
media

ENTRIES 264

MEDIA 9



Tupelo Flood



Pine Bluff Flood



Lake Village: 1927 Flood

MEDIA TYPE

- ☐ Photo 5
- ☐ Document 1

CATEGORY

- ☐ Natural Disasters 7
- ☐ Chicot 2
- ☐ Desha 1
- ☐ Monroe 1



C
A
L
S

THE ENCYCLOPEDIA OF ARKANSAS



10 ARKANSAN WOMEN IN THE ARTS



art:
painting



2

art:
sculpture



art:
sculpture

4

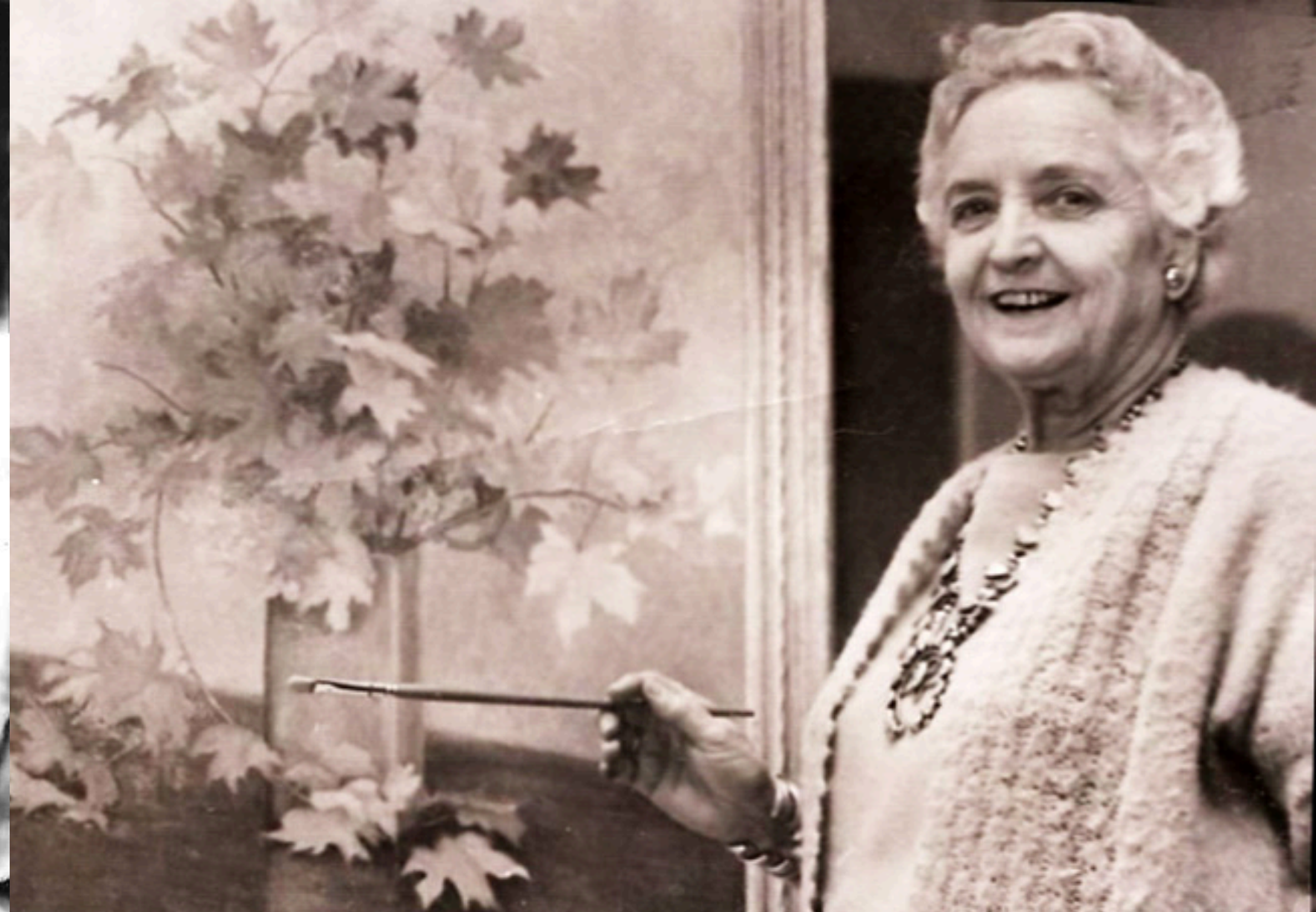
art:
painting





art:
poetry

6



art:
painting



8



art:
sculpture

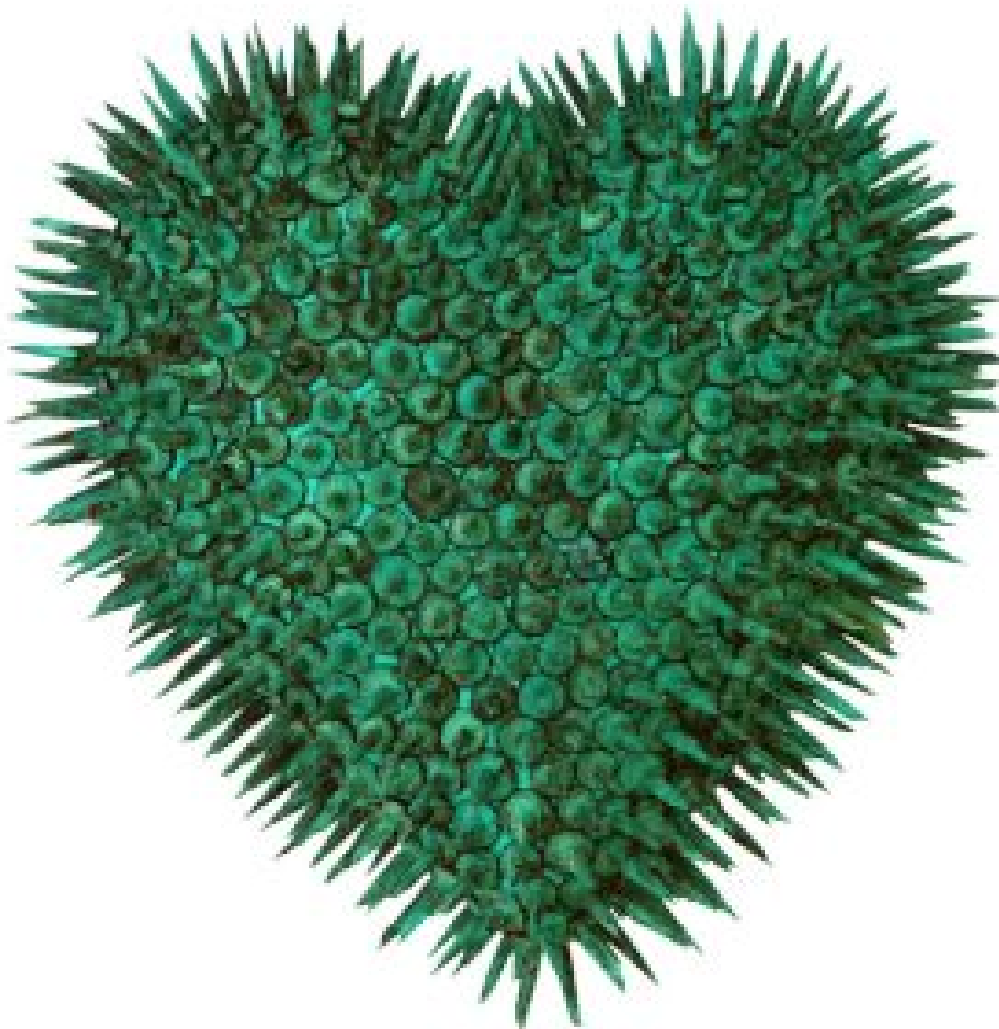


art:
dance



10

art:
sculpture



C
A
L
S

THE
ENCYCLOPEDIA
OF ARKANSAS



QUESTIONS

